

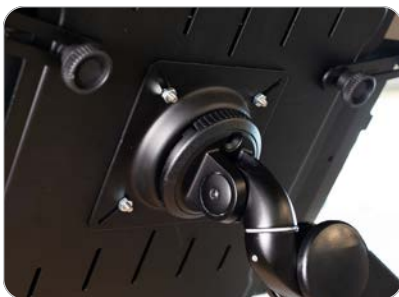
CLEAR
DESIGN

SPECS
NEXUS DUAL-MONITOR ARM



**RECLAIM DESK SPACE.
INCREASE COMFORT.**

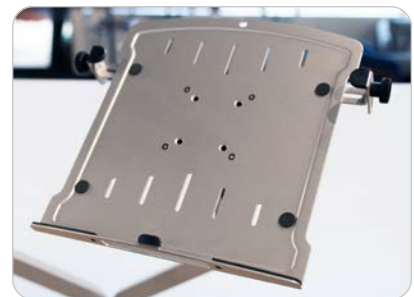
The Nexus Dual-Monitor Arm improves workplace ergonomics by raising screens to each individual's personal ideal height. Thanks to the finger-touch dynamic height adjustment and 360° rotation, this monitor arm adjusts easily and smoothly whether you're going from sitting to standing throughout the day, or turning your display to quickly collaborate with a colleague.



VESA Quick-Release Mount



Built-In Wire Management



Optional Laptop Tray

Free desktop space with the **Nexus Dual-Monitor Arm.**

MATERIAL

Aluminum alloy

DIMENSIONS**Overall W** 36.14" **D** 5.91" **H** 7.36"-18.39"**Arms H** 7.36"-18.39" (Center Point)**Laptop Tray W** 11.02"-15.35" **D** 11.89" **H** 0.67"-1.54"**FEATURES**

- Premium, ergonomic design
- Pneumatic gas-spring arms
- Finger-touch dynamic height adjustment
- Frees desktop space
- Built-in, concealed wire management
- Edge and grommet mounts included
- VESA 75x75/100x100 mm quick-release mount
- Fits up to two 32" monitors
- Available in 3 colors
- Optional laptop tray (sold separately) with adjustable clamps with rubber covers, handle for easy repositioning, ventilated plate for heat dissipation, VESA 75x75/100x100 mm compatibility, 11"-15.6" laptop compatibility, and 3 color options

OTHER

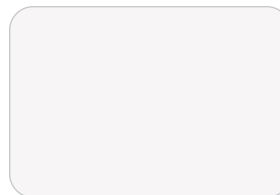
4.4-19.8-lb weight capacity (per arm), +90°/-35° monitor tilt, +/-128° VESA rotation, 360° rotation at two points, BIFMA Certified, FAST Program lead time

COLORS

Black



Silver



White

