

CLEAR
DESIGN

Helix™

height adjustable benching

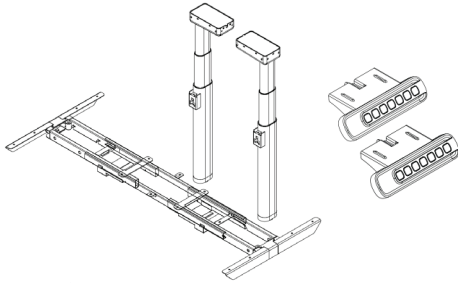


**Designed to Elevate,
Engineered for Speed.**

Helix™ rethinks height-adjustable benching through the combination of **rapid installation**, **flexible functionality**, and **elevated design**. Together with Tonos™ privacy screens, Helix™ creates a workplace solution that feels lighter, smarter, and more architectural—designed to support both performance and agility.

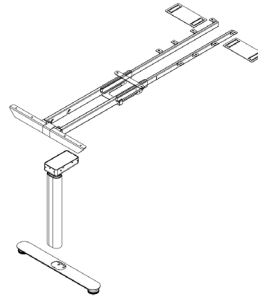
Statement of Line

FRAMES

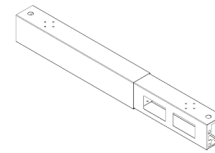


2-Leg Frame + Controllers

Includes Handset with 4 memory presets
(set of 2)



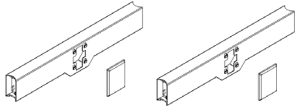
Return Kit



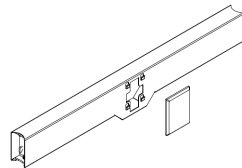
Power beam
48-60" power beam
66"-84" power beam



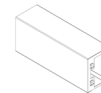
Feet
24" x 30"
For Single Runs
and Returns



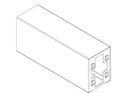
Single Run Crossbeam
24" / 30" deep single run cross beam



Double Run Crossbeam
24" / 30" deep double run cross beam

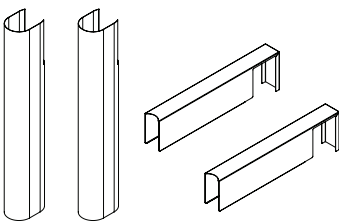


Connecting Bridge

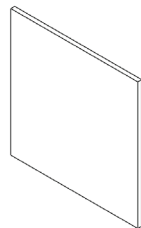


Magnetic Cable Tray

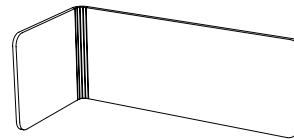
ACCESSORIES



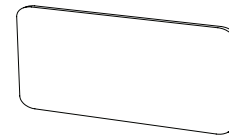
Sleeves
Leg & Crossbeam



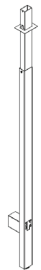
Gallery End Panels



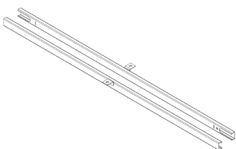
Tonos™ PET Screens



Fabric and Frosted Glass Screens



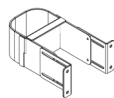
Power Pole



Stretcher Bar
Extended bars for
surfaces greater than 72"

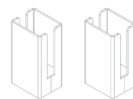


**Butterfly
Bracket**

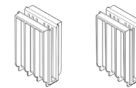


90o Column Bracket

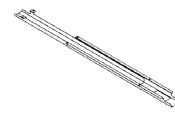
for Gallery End Panels



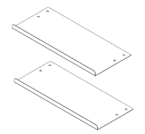
Screen Clips
for beam-mounted
screens



Screen Sleeves
inserts for
glass scees



**Magnetic Data
Cable Tray**



Cable Tray

Features

- Dual motor height adjustability with 3-stage legs
- Flexible planning options, including single and double runs, 90-degree configurations, and adjustable widths from 48” to 84”
- Integrated cable management with a dedicated power beam and data capacity for up to 24 CAT6 cables
- Clean architectural design with a refined, contemporary profile
- Distinctive slip-on leg sleeves available in three colorways, adding a unique, design-forward aesthetic
- ANSI-BIFMA X10.1-2024

Details



Handset controller with 4 memory presets



Privacy options include PET or glass screens, Gallery End Panels



Linear and 90° configurations, single and double runs



Removable Leg Sleeves in four coordinating colorways

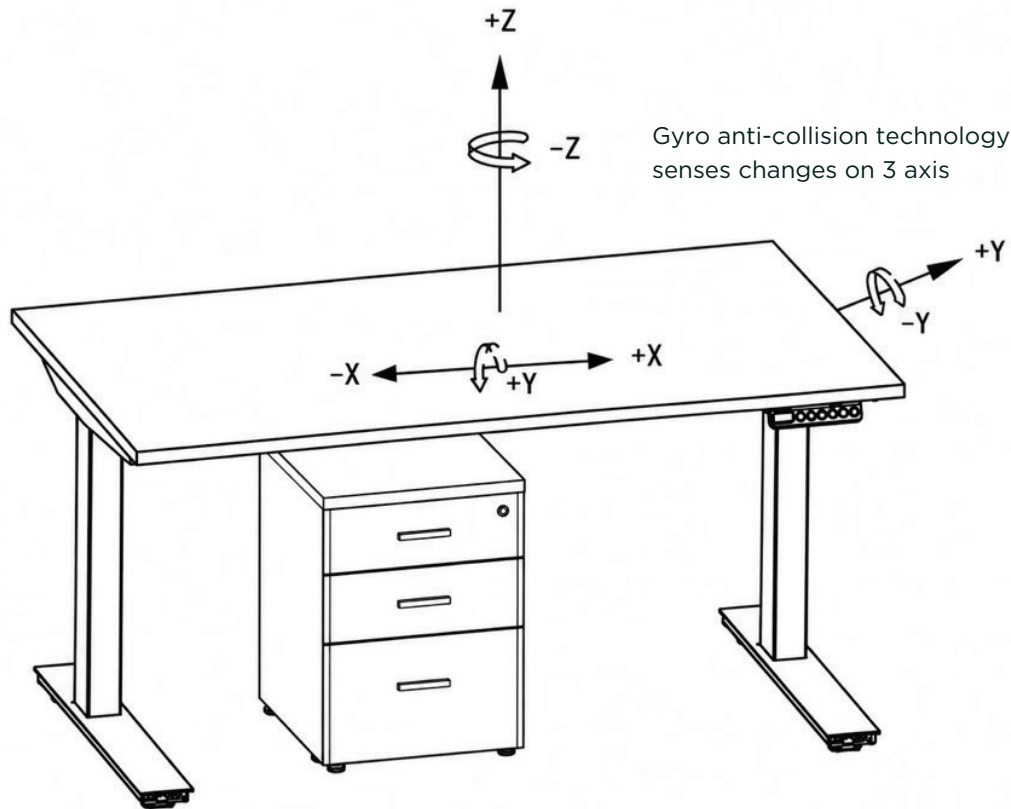
SPECIFICATIONS

ANSI BIFMA	X10.1-2024
Base Weight Without Top	117 LBS
Decibel Rating	50dB
Foot Length in Inches	24" foot for 24"D Top 30" foot for 29"D and 30"D tops
Frame Width Expansion	46" - 58" (expandable to 84" with stretcher bar)
Gauge of Steel	GA16, 1.5mm thickness
Handset	4-button Memory handset
Height Range (excluding top)	21.85-47.83 in
Height Range (including top)	22.83-48.82 in
Leg Diameter	3.43-2.24 in
Legs	3 stage
Max Lifting Capacity	250 lbs
Power Cord	UL SVT 3x18 AWG power cord with 3-prong plug, 118" length
Safety	Anti-collision technology
Speed	32mm/s
Standby Consumption	0.18W
Total Stroke	26"
UL	ETL
Worksurface Depths	24" and 30"
Worksurface Widths	48", 60", 66", 72" 84" - Custom Size

ANTI-COLLISION TECHNOLOGY

Helix™ bases have built-in gyroscope sensors in their control boxes which can detect angle and speed changes on three axis, triggering the anti-collision safety feature. When activated, bases reverse direction for 2 seconds before stopping.

Reaction Time: 50ms-600ms.



Any object in the path of the base’s movement will initiate the anti-collision safety feature, reversing the direction of the base for 2 seconds.

Feet stabilize
Single Runs
and Returns



Optional Leg Sleeves
available in 4 colors



Tonos PET or Glass
Privacy Screens can
be mounted to beam
or worksurface



POWER

Designed for flexibility and efficiency, the integrated power system delivers convenient access to power at every workstation. Concealed cable routing and centralized power distribution minimize clutter while supporting a clean, professional workspace.



Materials and Finishes

STEEL



Black



Silver



White

LAMINATE



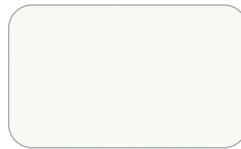
Shadow Elm



White Oak



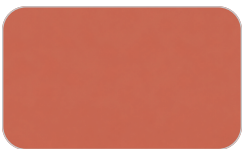
Sahara Ridge



Electric White*

FX PROGRAM:
Additional laminate finishes are available on a 20-business-day lead time.

ALUMINUM



Canyon



Shale

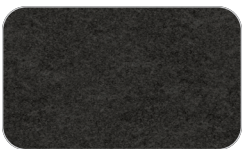


Fern

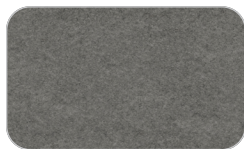


Harbor

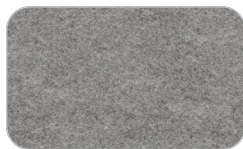
PET



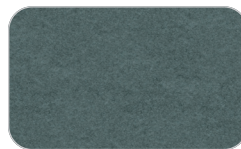
Carbon



Alloy



Luna



Harbor



Linen



Shale



Canyon



Twilight Available Winter 2026



Installation Times

per 2-pack

Frames - 20 minutes

with Power - 30 minutes

Certifications

ANSI-BIFMA X10.1-2024

UL

Care & Maintenance

Wipe with a damp cloth using water or gentle, nonabrasive cleaner. For guaranteed safety, patch test with diluted cleaner before wiping entire surface. Wipe dry with a clean cloth.

Warranty

5 Years